



# USER MANUAL

**BX-Y1A ON/OFF Selecting Program**

**Version: V1.0    Release Date: 2020.4.30**

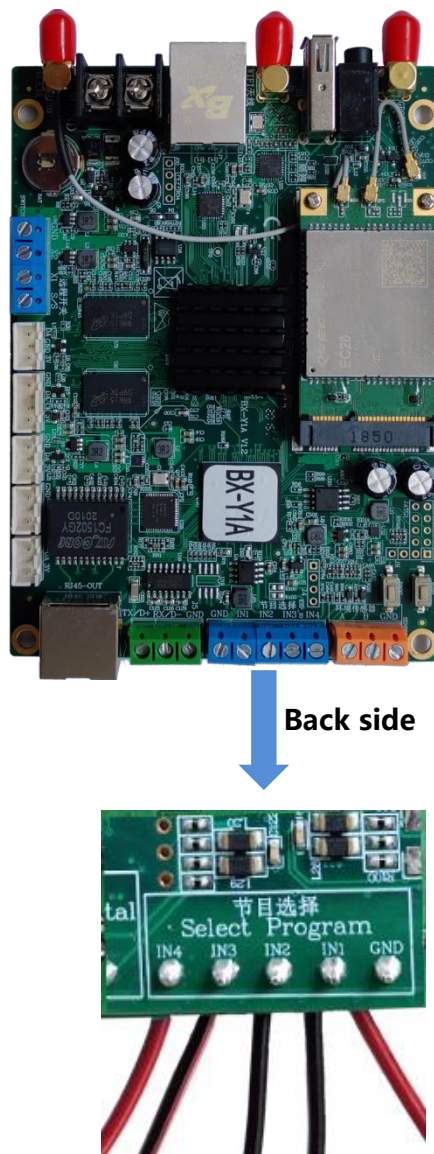
# Introduction of Outside IO Logic

Selecting program by outside IO is to choose program by outside signal, as to display different programs by different signal.

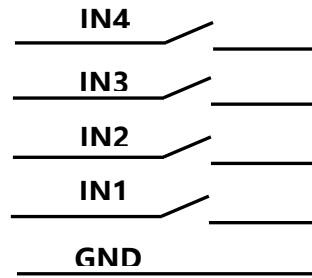
Outside IO trigger mode is level trigger, there are 5 IO on controller.

## 1. IO Port Introduction

IO is low level trigger. When pin is connecting with GND, means 1 close signal.



## 2. Logical Connection

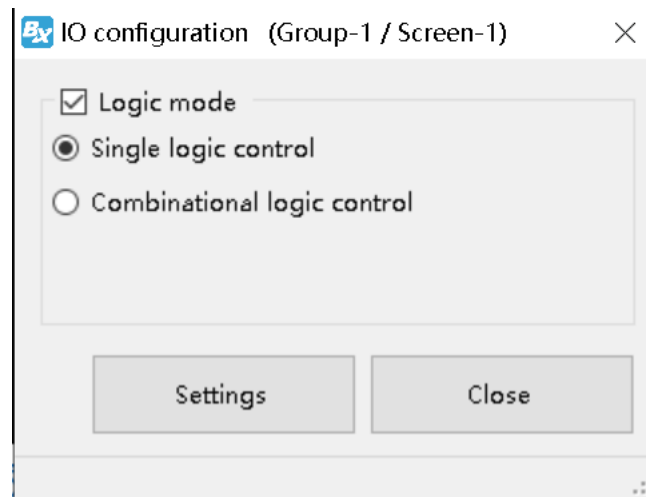


## 3. Level Trigger

- **Single logical controlling**

In single logical controlling, only allow one IO level trigger to be close signal.

Select "IO configuration" on "Advanced" , click "single logical control" , then click "setup" , as below:



Controlling logic:

When IN1 connects with GND, means pin IN1 is selected, play program 1.

When IN2 connects with GND, means pin IN2 is selected, play program 2.

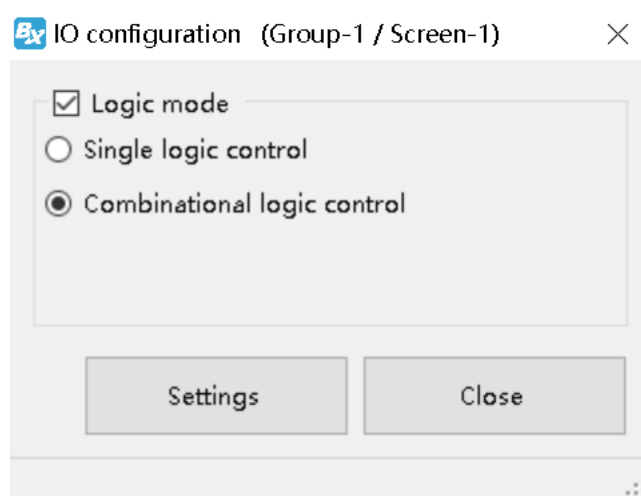
When IN3 connects with GND, means pin IN3 is selected, play program 3.

When IN4 connects with GND, means pin IN4 is selected, play program 4.

● **Combinational Logical Control**

" Combinational logical control" allow multi IO level to be close signal.

In "IO configuration" of "Advanced" , click " combinational logical control" , click "settings" , as below:



Control logic: " — " means closed signal, " O " means opened signal.

IN4	IN3	IN2	IN1	Specification
O	O	O	O	All IO is disconnected, default to play program 1
O	O	O	—	IO IN1 connect with GND, play program 2.
O	O	—	O	IO IN12 connect with GND, play program 3.
O	O	—	—	IO IN1, IO IN2 connect with GND, play program 4
O	—	O	O	IO IN3 connect with GND, play program 5
O	—	O	—	IO IN1, IO IN3 connect with GND, play program 6
O	—	—	O	IO IN2, IO IN3 connect with GND, play program 7
O	—	—	—	IO IN1, IO IN2 connect with GND, play program 8
—	O	O	O	IO IN4 connect with GND, play program 9
—	O	O	—	IO IN1, IO IN4 connect with GND, play program 10

—	○	—	○	IO IN2, IO IN4 connect with GND, play program 11
—	○	—	—	IO IN1, IO IN2, IO IN4 connect with GND, play program 12
—	—	○	○	IO IN3, IO IN4 connect with GND, play program 13
—	—	○	—	IO IN1, IO IN3, IO IN4 connect with GND, play program 14
—	—	—	○	IO IN2, IO IN3, IO IN4 connect with GND, play program 15
—	—	—	—	IO IN1, IO IN2, IO IN3, IO IN4 connect with GND, play program 16

**Shanghai ONBON Technology Inc.**

Address: 7 Floor, Tower 88, 1199#, North Qinzhou Road,  
Xuhui District, Shanghai City, China

Website: [www.onbonbx.com](http://www.onbonbx.com)



仰邦微信公众号

**ONBON (Jiangsu) Optoelectronic Industrial Co.,LTD**

Address: 1299#, Fuchun Jiang Road, Kunshan City,  
Jiangsu Province, China